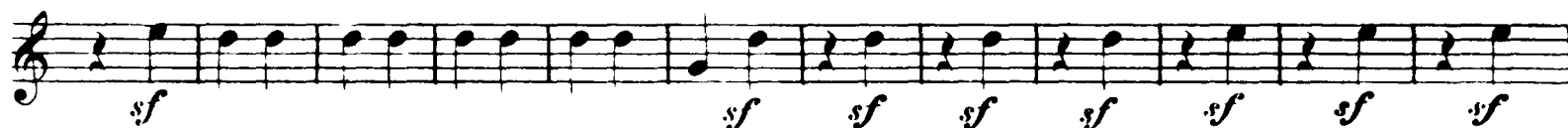
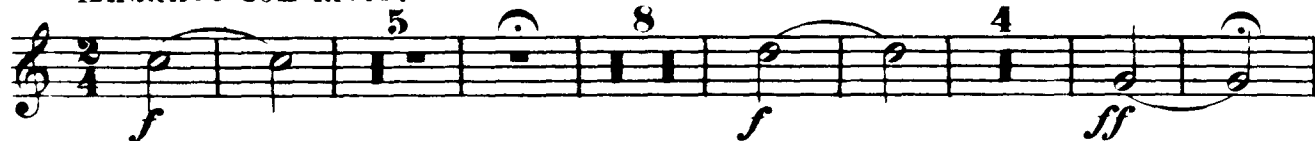


Ludwig van Beethoven
King Stephan, Op. 117

TROMBA I in Es.

Andante con moto.



TROMBA I.

Viol. I.

36 37 *f* *più f* *ff* *sf* *sf*

3 2

24

1 16 F 1 2 3 4

f *ff* *sf* *sf* *sf* *sf* *sf* *sf*

5 6 7 1 1 2 3 4 5

sf *sf* *sf* *sf* *sf* *sf* *sf* *sf*

6 7 8 9 10 11 12 13 14 15 1 2

sf *sf* *sempre più f*

Tempo I. Presto. Cor. III. IV.

3 4 5 6 4 20 21 22 *f* *più f* *ff*

ff

1

G 1

sf *sf* *sf* *sf* *sf* *sf* *sf* *sf*

2 2 2 2

sf *sf* *sf* *sf*

1

sf *sempre più f* *sempre stacc.*

H 2 2 *ff* *sf* *sf* *sf*

ff string. *ff*

1 1

sf

Ludwig van Beethoven
King Stephan, Op. 117

TROMBA II in Es.

Andante con moto.

Andante con moto.

Presto.

35 Viol. I

36 37 *f* *più f* *ff* *sf* B

The image shows a musical score for the song "The Rose Tree". It consists of two staves. The top staff is for the vocal melody, and the bottom staff is for the piano accompaniment. The key signature is one flat (B-flat), and the time signature is 2/4. The melody is marked with a forte (*f*) dynamic. The piano accompaniment features a steady eighth-note bass line and chords in the right hand. There are two numbered endings: a first ending marked with a '2' and a second ending marked with a '3'. The score is written in a traditional musical notation style with a treble clef and a key signature of one flat.

Beethoven — King Stephan Overture

2

TROMBA II.

Viol. I.

E

36 37 *f* *più f* *ff* *f*

3 2

24

1 16 F 1 2 3 4 5

6 7 1 1 2 3 4 5 6

7 8 9 10 11 12 13 14 15 1 2 3 4

sempre più f

6

Tempo I. Presto. Cor. III. IV.

4 20 21 22 *f* *più f* *ff* 1

G 1

2 2 2 2

1

sempre più f *sempre staccato*

H 2 2 *ff* *ff* *f* *f* *f* *f*

ff string.

1 1